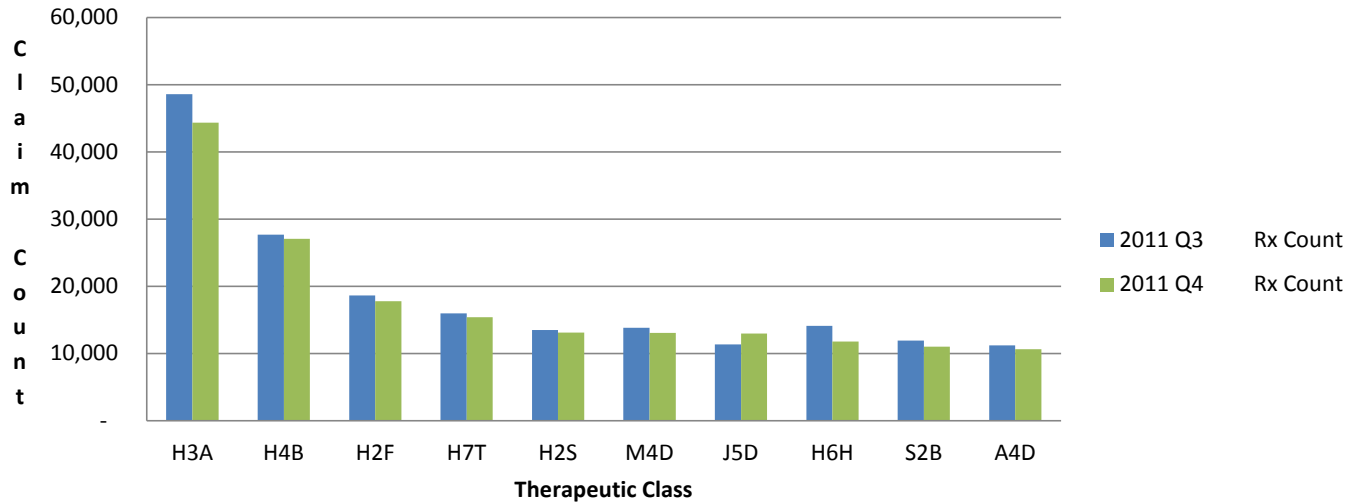


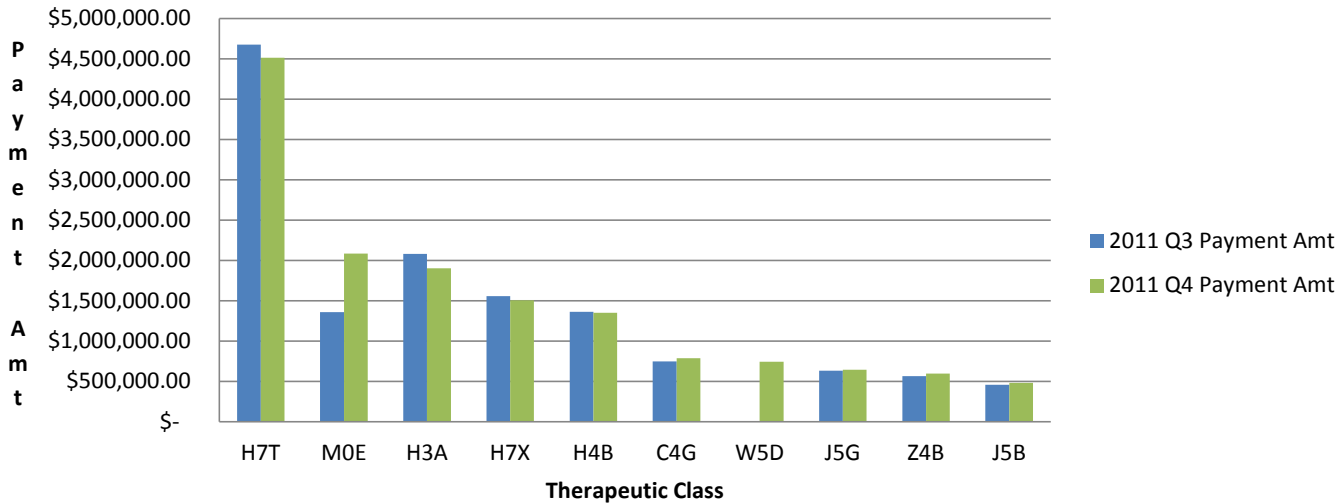
**Nevada Medicaid
Top 10 Therapeutic Classes Ranked by Claim Count
For Service Period 10-01-2011 Through 12-31-2011**



Class	Specific Therapeutic Class Description	2011 Q3 Rx Count	2011 Q4 Rx Count	% Change in Payment Amt	2011 Q3 Payment Amt	2012 Q4 Payment Amt
H3A	ANALGESICS, NARCOTICS	48,593	44,380	\$ 1,780,220.95	\$ 1,904,304.37	\$ 1,976,855.54
H4B	ANTICONVULSANTS	27,712	27,069	\$ 1,304,525.42	\$ 1,351,589.44	\$ 1,420,566.12
H2F	ANTI-ANXIETY DRUGS	18,674	17,786	\$ 83,346.62	\$ 164,464.42	\$ 173,982.33
H7T	ANTIPSYCHOTICS, ATYPICAL, DOPAMINE, & SEROTONIN ANTAG	15,978	15,414	\$ 4,533,748.69	\$ 4,513,920.39	\$ 4,781,883.89
H2S	SELECTIVE SEROTONIN REUPTAKE INHIBITOR (SSRIS)	13,513	13,123	\$ 147,244.75	\$ 185,959.00	\$ 574,915.44
M4D	ANTIHYPERLIPIDEMIC - HMG COA REDUCTASE INHIBITORS	13,831	13,109	\$ 306,371.14	\$ 320,641.96	\$ 352,461.22
J5D	BETA-ADRENERGIC AGENTS	11,398	13,005	\$ 422,419.96	\$ 464,416.73	\$ 194,058.15
H6H	SKELETAL MUSCLE RELAXANTS	14,158	11,812	\$ 70,800.79	\$ 111,786.14	\$ 127,251.31
S2B	NSAIDS, CYCLOOXYGENASE INHIBITOR - TYPE	11,960	11,028	\$ 66,937.41	\$ 101,554.20	\$ 127,876.33
A4D	ANTIHYPERTENSIVES, ACE INHIBITORS	11,216	10,641	\$ 23,869.37	\$ 52,120.93	\$ 56,215.98

Query run 5/29/2012.

Nevada Medicaid
Top 10 Therapeutic Classes Ranked by Payment Amount
For Service Period 10-01-2011 Through 12-31-2011



Class	Specific Therapeutic Class Description	2011 Q3 Rx Count	2011 Q4 Rx Count	2011 Q3 Payment Amt	2011 Q4 Payment Amt	% Change in Payment Amt
H7T	ANTIPSYCHOTICS, ATYPICAL, DOPAMINE, & SEROTONIN ANTAG	15,978	15,414	\$ 4,678,401.39	\$ 4,513,920.39	-3.52%
M0E	ANTIHEMOPHILIC FACTORS	47	47	\$ 1,358,736.98	\$ 2,086,797.88	53.58%
H3A	ANALGESICS, NARCOTICS	48,593	44,380	\$ 2,080,848.88	\$ 1,904,304.37	-8.48%
H7X	ANTIPSYCHOTICS, ATYP, D2 PARTIAL AGONIST/5HT MIXED	3,015	2,833	\$ 1,558,783.28	\$ 1,507,539.36	-3.29%
H4B	ANTICONVULSANTS	27,712	27,069	\$ 1,364,631.78	\$ 1,351,589.44	-0.96%
C4G	INSULINS	5,674	5,214	\$ 747,687.54	\$ 790,191.05	5.68%
W5D	ANTIVIRAL MONOCLONAL ANTIBODIES	-	364	\$ -	\$ 746,749.59	-
J5G	BETA-ADRENERGIC AND GLUCOCORTICOID COMBINATIONS	3,872	3,698	\$ 634,128.88	\$ 645,468.58	1.79%
Z4B	LEUKOTRIENE RECEPTOR ANTAGONISTS	4,645	4,698	\$ 568,042.76	\$ 600,244.42	5.67%
J5B	ADRENERGICS, AROMATIC, NON-CATECHOLAMINE	3,551	3,686	\$ 459,508.82	\$ 482,665.55	5.04%

Query run 5/29/2012.

Nevada Medicaid
Top 50 All Drugs Ranked by Claim Count
For Service Period 10-01-2011 Through 12-31-2011

Grand Total Payment Amount for Period: \$32,060,707.18

All Drugs Total Payment for Period: \$ 9,108,869.86

Drug Name	Total Claim Count	Total Payment Amount	Total Ingredient Cost	Total U & C Amount	Avg Quantity Per Rx	Avg Days Supply Per Rx	Avg Payment Per Rx	% Total Payment	Accumulative Payment %
HYDROCODONE-ACETAMINOPHEN *	20,289	\$ 334,184.72	\$ 264,747.36	\$ 950,620.10	87.39	19.59	\$ 16.47	3.7%	3.7%
ALBUTEROL SULFATE *	12,399	\$ 402,473.71	\$ 361,320.89	\$ 667,742.92	70.89	20.79	\$ 32.46	4.4%	8.1%
ALPRAZOLAM *	9,630	\$ 94,114.47	\$ 49,328.58	\$ 384,984.62	65.99	26.23	\$ 9.77	1.0%	9.1%
LISINAPRIL *	9,188	\$ 45,062.96	\$ 20,014.25	\$ 227,801.76	37.75	33.77	\$ 4.90	0.5%	9.6%
SIMVASTATIN *	7,355	\$ 34,913.29	\$ 17,954.38	\$ 502,200.02	32.78	32.67	\$ 4.75	0.4%	10.0%
OXYCODONE W/ ACETAMINOPHEN *	7,159	\$ 224,695.63	\$ 203,732.86	\$ 818,362.67	85.76	18.58	\$ 31.39	2.5%	12.5%
LEVOTHYROXINE SODIUM *	6,684	\$ 48,672.60	\$ 31,119.81	\$ 99,171.27	33.68	33.53	\$ 7.28	0.5%	13.0%
OXYCODONE HCL *	6,252	\$ 595,913.36	\$ 583,873.65	\$ 1,156,444.85	115.71	26.24	\$ 95.32	6.5%	19.5%
AMLODIPINE BESYLATE *	6,063	\$ 30,076.68	\$ 15,561.08	\$ 305,127.12	33.53	32.35	\$ 4.96	0.3%	19.9%
GABAPENTIN *	5,990	\$ 134,761.82	\$ 118,899.42	\$ 684,178.41	96.43	30.47	\$ 22.50	1.5%	21.4%
AMOXICILLIN *	5,916	\$ 49,870.34	\$ 26,977.42	\$ 85,007.36	93.23	9.29	\$ 8.43	0.5%	21.9%
RISPERIDONE *	5,766	\$ 194,108.29	\$ 176,794.61	\$ 1,209,432.60	47.90	27.63	\$ 33.66	2.1%	24.0%
METFORMIN HCL *	5,709	\$ 41,155.34	\$ 27,653.88	\$ 205,131.09	71.99	34.36	\$ 7.21	0.5%	24.5%
IBUPROFEN *	5,462	\$ 35,729.22	\$ 16,017.83	\$ 1,084,835.78	69.08	19.07	\$ 6.54	0.4%	24.9%
AZITHROMYCIN *	5,419	\$ 101,309.70	\$ 80,539.03	\$ 236,583.64	34.27	5.18	\$ 18.70	1.1%	26.0%
ZOLPIDEM TARTRATE *	5,069	\$ 33,732.85	\$ 16,576.58	\$ 318,079.71	28.15	28.09	\$ 6.65	0.4%	26.4%
MONTELUKAST SODIUM *	4,657	\$ 597,638.97	\$ 596,585.96	\$ 821,020.01	30.22	30.11	\$ 128.33	6.6%	32.9%
CARISOPRODOL *	4,632	\$ 40,639.10	\$ 25,594.14	\$ 207,280.04	84.37	28.55	\$ 8.77	0.4%	33.4%
RANITIDINE HCL *	4,613	\$ 38,420.26	\$ 23,053.54	\$ 227,073.97	60.25	29.61	\$ 8.33	0.4%	33.8%
QUETIAPINE FUMARATE *	4,582	\$ 1,711,211.69	\$ 1,733,762.87	\$ 2,353,222.59	44.71	28.75	\$ 373.46	18.8%	52.6%
CLONAZEPAM *	4,244	\$ 35,091.19	\$ 16,018.71	\$ 163,726.14	59.54	27.69	\$ 8.27	0.4%	53.0%
CITALOPRAM HYDROBROMIDE *	4,022	\$ 24,489.77	\$ 11,148.25	\$ 172,657.29	33.10	29.51	\$ 6.09	0.3%	53.2%
FUROSEMIDE *	3,916	\$ 16,564.92	\$ 5,831.32	\$ 44,088.17	42.33	31.23	\$ 4.23	0.2%	53.4%
TRAZODONE HCL *	3,865	\$ 31,514.76	\$ 17,593.27	\$ 88,087.05	41.00	29.18	\$ 8.15	0.3%	53.8%
MORPHINE SULFATE *	3,787	\$ 319,265.27	\$ 310,312.19	\$ 574,706.11	88.99	24.30	\$ 84.31	3.5%	57.3%
METOPROLOL TARTRATE *	3,624	\$ 17,042.87	\$ 7,122.71	\$ 63,116.54	61.35	31.22	\$ 4.70	0.2%	57.4%
LORAZEPAM *	3,606	\$ 29,205.69	\$ 13,203.88	\$ 135,794.34	52.11	20.54	\$ 8.10	0.3%	57.8%
DIAZEPAM *	3,560	\$ 24,549.59	\$ 8,066.42	\$ 70,915.79	61.61	25.57	\$ 6.90	0.3%	58.0%
DIVALPROEX SODIUM *	3,541	\$ 187,900.17	\$ 178,909.24	\$ 658,063.58	92.71	29.77	\$ 53.06	2.1%	60.1%
TEMAZEPAM *	3,532	\$ 51,240.11	\$ 36,449.03	\$ 95,752.27	23.16	22.91	\$ 14.51	0.6%	60.7%
SERTRALINE HCL *	3,514	\$ 24,767.58	\$ 12,142.66	\$ 184,004.96	35.99	29.14	\$ 7.05	0.3%	60.9%
CLONIDINE HCL *	3,462	\$ 46,982.08	\$ 35,314.30	\$ 93,952.23	55.07	29.45	\$ 13.57	0.5%	61.4%
LORATADINE *	3,455	\$ 24,356.57	\$ 9,535.69	\$ 52,994.25	37.06	28.47	\$ 7.05	0.3%	61.7%
CYCLOBENZAPRINE HCL *	3,450	\$ 24,052.75	\$ 11,392.73	\$ 127,149.44	60.07	25.34	\$ 6.97	0.3%	62.0%
HYDROCHLOROTHIAZIDE *	3,124	\$ 12,951.02	\$ 3,926.30	\$ 35,694.66	34.38	34.37	\$ 4.15	0.1%	62.1%
ASPIRIN *	3,123	\$ 12,388.09	\$ 3,093.78	\$ 20,728.82	31.00	30.01	\$ 3.97	0.1%	62.3%
OMEPRAZOLE *	3,122	\$ 15,930.42	\$ 16,681.58	\$ 310,109.95	37.79	32.12	\$ 5.10	0.2%	62.4%
FLUOXETINE HCL *	3,039	\$ 26,738.54	\$ 17,252.80	\$ 168,241.68	40.81	29.73	\$ 8.80	0.3%	62.7%
TRAMADOL HCL *	3,014	\$ 29,500.76	\$ 20,160.36	\$ 131,450.35	82.40	20.41	\$ 9.79	0.3%	63.1%
FLUTICASON- SALMETEROL *	3,001	\$ 558,555.26	\$ 564,808.26	\$ 836,645.65	57.05	29.97	\$ 186.12	6.1%	69.2%
GLUCOSE BLOOD *	2,956	\$ 328,677.42	\$ 327,480.71	\$ 399,196.74	107.03	31.25	\$ 111.19	3.6%	72.8%
FLUTICASON PROPIONATE (NASAL) *	2,880	\$ 68,142.06	\$ 59,979.16	\$ 201,827.37	16.18	29.70	\$ 23.66	0.7%	73.5%
ARIPIPRAZOLE *	2,831	\$ 1,507,532.76	\$ 1,523,637.73	\$ 2,001,556.37	32.24	27.36	\$ 532.51	16.6%	90.1%
FAMOTIDINE *	2,781	\$ 24,341.07	\$ 15,706.75	\$ 123,442.19	51.60	29.48	\$ 8.75	0.3%	90.4%
WARFARIN SODIUM *	2,703	\$ 21,097.00	\$ 13,759.11	\$ 48,393.76	27.04	21.75	\$ 7.81	0.2%	90.6%
ATENLOL *	2,665	\$ 10,900.03	\$ 3,755.45	\$ 44,842.52	37.85	32.05	\$ 4.09	0.1%	90.7%
PREDNISONE *	2,551	\$ 12,449.03	\$ 3,867.31	\$ 27,595.21	39.05	15.34	\$ 4.88	0.1%	90.8%
CLOPIDOGREL BISULFATE *	2,512	\$ 246,199.66	\$ 278,514.63	\$ 567,350.00	31.72	31.68	\$ 98.01	2.7%	93.5%
AMPHETAMINE-DEXTROAMPHETAMINE *	2,432	\$ 304,434.66	\$ 299,402.26	\$ 389,188.61	40.88	28.83	\$ 125.18	3.3%	96.9%
METHYLPHENIDATE HCL *	2,398	\$ 283,323.76	\$ 277,985.05	\$ 360,076.11	39.87	28.43	\$ 118.15	3.1%	100.0%

Query run 3/27/2012.

Nevada Medicaid
Top 50 All Drugs Ranked by Payment
For Service Period 10-01-2011 Through 12-31-2011

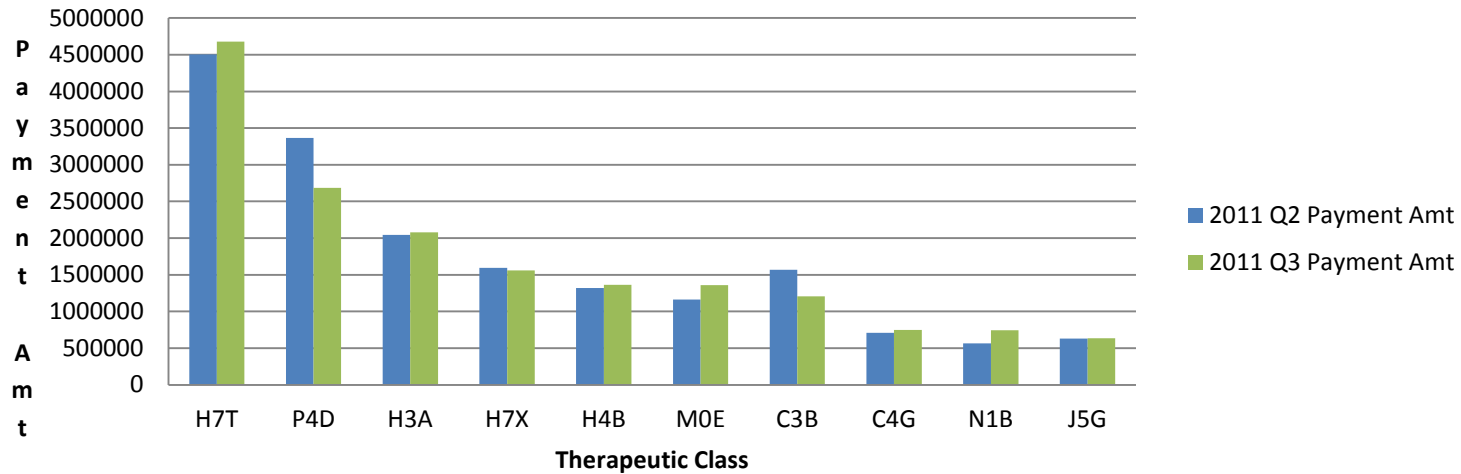
Grand Total Payment Amount for Period: \$32,060,707.18

All Drugs Total Payment for Period: \$ 18,437,240.73

Drug Name	Total Claim Count	Total Payment Amount	Total Ingredient Cost	Total U & C Amount	Avg Quantity Per Rx	Avg Days Supply Per Rx	Avg Payment Per Rx	% Total Payment	Accumulative Payment %
QUETIAPINE FUMARATE *	4,582	\$ 1,711,211.69	\$ 1,733,762.87	\$ 2,353,222.59	44.71	28.75	\$ 373.46	9.28%	9.28%
ARIPIPRAZOLE *	2,831	\$ 1,507,532.76	\$ 1,523,637.73	\$ 2,001,556.37	32.24	27.36	\$ 532.51	8.18%	17.46%
ANTIHEMOPHILIC FACTOR RAHF-PFM *	10	\$ 1,498,041.02	\$ 1,497,993.42	\$ 2,155,588.20	63,810.20	29.60	\$ 149,804.10	8.13%	25.58%
OLANZAPINE *	1,627	\$ 983,879.50	\$ 990,451.33	\$ 1,460,253.80	35.96	28.50	\$ 604.72	5.34%	30.92%
PALIVIZUMAB *	363	\$ 746,649.59	\$ 794,395.86	\$ 1,007,363.94	0.98	29.15	\$ 2,056.89	4.05%	34.97%
ZIPRASIDONE HCL *	1,689	\$ 649,221.77	\$ 653,160.20	\$ 864,467.31	47.10	26.66	\$ 384.38	3.52%	38.49%
MONTELUKAST SODIUM *	4,657	\$ 597,638.97	\$ 596,585.96	\$ 821,020.01	30.22	30.11	\$ 128.33	3.24%	41.73%
OXYCODONE HCL *	6,252	\$ 595,913.36	\$ 583,873.65	\$ 1,156,444.85	115.71	26.24	\$ 95.32	3.23%	44.96%
FLUTICASON-SALMETEROL *	3,001	\$ 558,555.26	\$ 564,808.26	\$ 836,645.65	57.05	29.97	\$ 186.12	3.03%	47.99%
ANTIHEMOPHILIC FACTOR/VON WILLEBRAND FACTOR COMPLEX (HUMAN)*	30	\$ 482,695.96	\$ 482,557.92	\$ 1,689,409.80	14,491.67	18.40	\$ 16,089.87	2.62%	50.61%
ALBUTEROL SULFATE *	12,399	\$ 402,473.71	\$ 361,320.89	\$ 667,742.92	70.89	20.79	\$ 32.46	2.18%	52.79%
HYDROCODONE-ACETAMINOPHEN *	20,289	\$ 334,184.72	\$ 264,747.36	\$ 950,620.10	87.39	19.59	\$ 16.47	1.81%	54.61%
EPOETIN ALFA *	782	\$ 331,660.78	\$ 332,009.42	\$ 532,745.16	463.78	1.25	\$ 424.12	1.80%	56.41%
ESOMEPRAZOLE MAGNESIUM *	2,317	\$ 331,291.97	\$ 333,091.93	\$ 509,637.45	31.38	29.25	\$ 142.98	1.80%	58.20%
GLUCOSE BLOOD *	2,956	\$ 328,677.42	\$ 327,480.71	\$ 399,196.74	107.03	31.25	\$ 111.19	1.78%	59.99%
INSULIN GLARGINE *	2,159	\$ 326,700.82	\$ 338,564.48	\$ 493,580.74	16.58	31.79	\$ 151.32	1.77%	61.76%
MORPHINE SULFATE *	3,787	\$ 319,265.27	\$ 310,312.19	\$ 574,706.11	88.99	24.30	\$ 84.31	1.73%	63.49%
AMPHETAMINE-DEXTROAMPHETAMINE *	2,432	\$ 304,434.66	\$ 299,402.26	\$ 389,188.61	40.88	28.83	\$ 125.18	1.65%	65.14%
EMTRICITABINE-TENOFOVIR DISOPROXIL FUMARATE *	308	\$ 303,863.56	\$ 304,682.66	\$ 378,431.81	29.07	29.14	\$ 986.57	1.65%	66.79%
METHYLPHENIDATE HCL *	2,398	\$ 283,323.76	\$ 277,985.05	\$ 360,076.11	39.87	28.43	\$ 118.15	1.54%	68.32%
EFAVIRENZ-EMTRICITABINE-TENOFOVIR DISOPROXIL FUMARATE *	187	\$ 273,006.08	\$ 277,059.34	\$ 357,099.30	28.57	28.57	\$ 1,459.93	1.48%	69.81%
PALIPERIDONE PALMITATE *	215	\$ 256,208.66	\$ 257,166.20	\$ 308,523.06	1.16	26.06	\$ 1,191.67	1.39%	71.20%
TELAPREVIR *	15	\$ 250,991.40	\$ 250,920.00	\$ 461,733.57	168.00	28.00	\$ 16,732.76	1.36%	72.56%
CLOPIDOGREL BISULFATE *	2,512	\$ 246,199.66	\$ 278,514.63	\$ 567,350.00	31.72	31.68	\$ 98.01	1.34%	73.89%
PALIPERIDONE *	427	\$ 244,521.78	\$ 247,070.80	\$ 322,222.84	35.91	28.82	\$ 572.65	1.33%	75.22%
DEFERASIROX *	49	\$ 235,216.84	\$ 234,983.60	\$ 391,154.37	80.61	29.18	\$ 4,800.34	1.28%	76.49%
RISPERIDONE MICROSPHERES *	302	\$ 228,414.17	\$ 227,005.21	\$ 262,271.74	1.82	20.29	\$ 756.34	1.24%	77.73%
TOBRAMYCIN *	64	\$ 226,228.96	\$ 251,804.06	\$ 344,855.78	272.50	28.13	\$ 3,534.83	1.23%	78.96%
OXYCODONE W/ ACETAMINOPHEN *	7,159	\$ 224,695.63	\$ 203,732.86	\$ 818,362.67	85.76	18.58	\$ 31.39	1.22%	80.18%
TIOTROPIUM BROMIDE MONOHYDRATE *	1,368	\$ 224,330.46	\$ 231,046.53	\$ 405,118.14	30.97	30.80	\$ 163.98	1.22%	81.40%
MULTI-INGREDIENT COMPOUND	1,801	\$ 213,327.18	\$ 183,147.29	\$ 917,402.49	195.27	8.90	\$ 118.45	1.16%	82.55%
SOMATROPIN *	95	\$ 200,285.57	\$ 204,303.03	\$ 357,712.59	6.61	26.27	\$ 2,108.27	1.09%	83.64%
RISPERIDONE *	5,766	\$ 194,108.29	\$ 176,794.61	\$ 1,209,432.60	47.90	27.63	\$ 33.66	1.05%	84.69%
DULOXETINE HCL *	1,226	\$ 193,540.99	\$ 200,407.73	\$ 310,960.97	39.57	30.19	\$ 157.86	1.05%	85.74%
DIVALPROEX SODIUM *	3,541	\$ 187,900.17	\$ 178,909.24	\$ 658,063.58	92.71	29.77	\$ 53.06	1.02%	86.76%
DORNASE ALFA *	90	\$ 184,019.78	\$ 197,926.15	\$ 273,034.26	91.64	28.97	\$ 2,044.66	1.00%	87.76%
INTERFERON BETA-1A *	58	\$ 182,880.56	\$ 182,604.48	\$ 237,155.06	5.00	27.60	\$ 3,153.11	0.99%	88.75%
TRASTUZUMAB *	42	\$ 177,793.45	\$ 177,722.05	\$ 261,225.00	20.10	8.67	\$ 4,233.18	0.96%	89.71%
LISDEXAMFETAMINE DIMESYLATE *	1,122	\$ 166,714.06	\$ 164,497.21	\$ 211,668.18	30.73	29.51	\$ 148.59	0.90%	90.62%
BUDESONIDE (INHALATION) *	544	\$ 165,914.34	\$ 167,681.72	\$ 191,863.49	97.80	27.32	\$ 304.99	0.90%	91.52%
FENTANYL *	547	\$ 165,264.59	\$ 167,504.85	\$ 256,386.28	9.55	25.71	\$ 302.13	0.90%	92.42%
MOMETASONE FUROATE (NASAL) *	1,685	\$ 165,171.51	\$ 161,468.81	\$ 239,268.29	17.20	29.62	\$ 98.02	0.90%	93.31%
ENOXAPARIN SODIUM *	348	\$ 163,817.81	\$ 166,002.58	\$ 246,195.51	19.86	9.76	\$ 470.74	0.89%	94.20%
GLATIRAMER ACETATE *	128	\$ 161,278.89	\$ 160,669.61	\$ 215,423.43	1.00	10.74	\$ 1,259.99	0.87%	95.07%
IDURSULFASE *	10	\$ 160,893.40	\$ 160,845.80	\$ 210,256.20	18.00	14.00	\$ 16,089.34	0.87%	95.95%
RALTEGRAVIR POTASSIUM *	164	\$ 150,501.30	\$ 149,725.42	\$ 183,995.78	58.10	28.51	\$ 917.69	0.82%	96.76%
ATOMOXETINE HCL *	803	\$ 150,202.31	\$ 147,754.39	\$ 187,526.75	32.97	29.53	\$ 187.05	0.81%	97.58%
ETANERCEPT *	80	\$ 148,970.12	\$ 150,434.94	\$ 190,034.04	4.41	28.23	\$ 1,862.13	0.81%	98.39%
IPRATROPIUM-ALBUTEROL *	1,350	\$ 148,898.31	\$ 153,783.97	\$ 288,557.12	77.97	22.78	\$ 110.30	0.81%	99.19%
ATORVASTATIN CALCIUM *	1,516	\$ 148,727.91	\$ 154,183.12	\$ 277,105.90	32.42	32.20	\$ 98.11	0.81%	100.00%

Query run 3/27/2012.

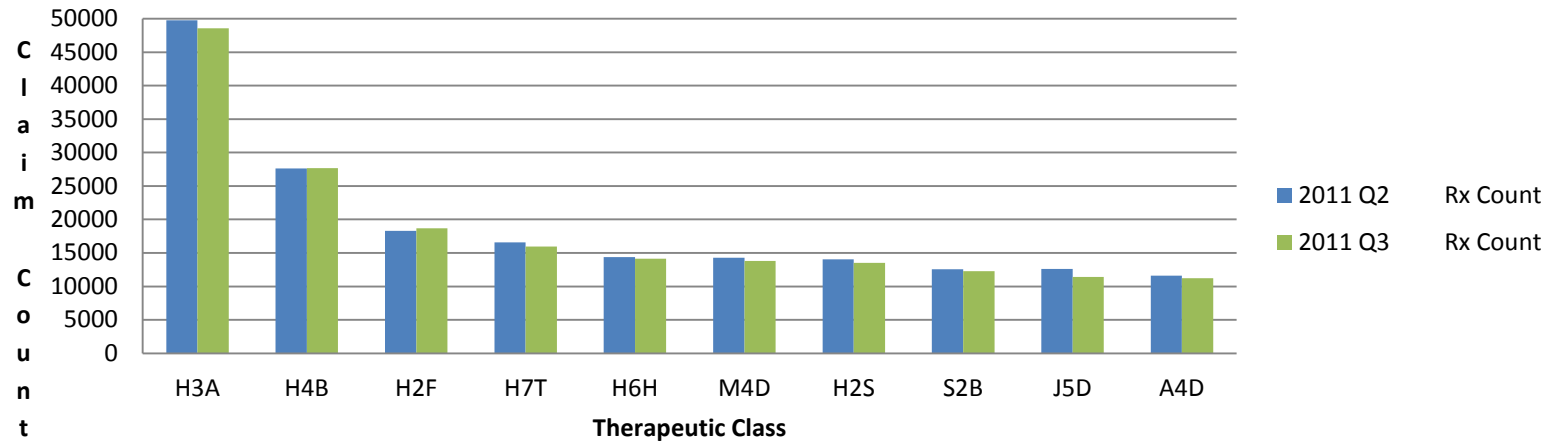
Nevada Medicaid
Top 10 Therapeutic Classes Ranked by Payment Amount
For Service Period 01-01-2012 Through 03-31-2012



Class	Specific Therapeutic Class Description	2011 Q4 Rx Count	2012 Q1 Rx Count	2011 Q4 Payment Amt	2012 Q1 Payment Amt	% Change in Payment Amt
H7T	ANTIPSYCHOTICS, ATYPICAL, DOPAMINE, & SEROTONIN ANTAG	15,518	17,660	\$ 4,518,887.25	\$ 4,783,774.81	5.86%
H3A	ANALGESICS, NARCOTICS	46,209	52,149	\$ 1,916,144.93	\$ 1,993,149.14	4.02%
M0E	ANTIHEMOPHILIC FACTORS	49	48	\$ 2,100,896.78	\$ 1,968,820.26	-6.29%
H7X	ANTIPSYCHOTICS, ATYP, D2 PARTIAL AGONIST/5HT MIXED	2,838	3,246	\$ 1,506,963.68	\$ 1,727,788.09	14.65%
H4B	ANTICONVULSANTS	27,301	29,898	\$ 1,356,950.23	\$ 1,419,954.77	4.64%
W5D	ANTIVIRAL MONOCLONAL ANTIBODIES	364	619	\$ 746,749.59	\$ 1,297,457.94	73.75%
C4G	INSULINS	5,274	6,109	\$ 794,081.71	\$ 977,996.74	23.16%
J5G	BETA-ADRENERGIC AND GLUCOCORTICOID COMBINATIONS	3,715	4,523	\$ 647,208.62	\$ 734,023.52	0.00%
Z4B	LEUKOTRIENE RECEPTOR ANTAGONISTS	4,705	5,239	\$ 600,387.33	\$ 680,945.29	13.42%
J5D	BETA-ADRENERGIC AGENTS	13,299	16,165	\$ 466,630.24	\$ 576,235.76	23.49%

Query run 7/10/2012

Nevada Medicaid
Top 10 Therapeutic Classes Ranked by Claim Count
For Service Period 01-01-2012 Through 03-31-2012



Class	Specific Therapeutic Class Description	2011 Q4 Rx Count	2012 Q1 Rx Count	%Change in Rx Count	2011 Q4 Payment Amt	2012 Q1 Payment Amt
H3A	ANALGESICS, NARCOTICS	46,209	52,149	12.85%	\$ 1,916,144.93	\$ 1,993,149.14
H4B	ANTICONVULSANTS	27,301	29,898	9.51%	\$ 1,356,950.23	\$ 1,419,954.77
H2F	ANTI-ANXIETY DRUGS	17,964	18,945	5.46%	\$ 164,792.68	\$ 174,897.61
H7T	ANTIPSYCHOTICS, ATYPICAL, DOPAMINE, & SEROTONIN ANTAG	15,518	17,660	13.80%	\$ 4,518,887.25	\$ 4,783,774.81
J5D	BETA-ADRENERGIC AGENTS	13,299	16,165	21.55%	\$ 466,630.24	\$ 576,235.76
M4D	ANTIHYPERTENSIVES - HMG COA REDUCTASE INHIBITORS	13,199	14,916	13.01%	\$ 320,950.84	\$ 352,108.74
H2S	SELECTIVE SEROTONIN REUPTAKE INHIBITOR (SSRIS)	13,182	14,249	8.09%	\$ 186,050.10	\$ 194,525.73
H6H	SKELETAL MUSCLE RELAXANTS	11,857	13,616	14.84%	\$ 117,119.65	\$ 136,033.64
S2B	NSAIDS, CYCLOOXYGENASE INHIBITOR - TYPE	11,642	12,974	11.44%	\$ 103,233.62	\$ 107,675.38
A4D	ANTIHYPERTENSIVES, ACE INHIBITORS	10,779	11,858	10.01%	\$ 52,303.61	\$ 56,462.90

Query run 7/10/2012

Nevada Medicaid
Top 50 All Drugs Ranked by Payment
For Service Period 01-01-2012 Through 03-31-2012

Grand Total Payment Amount for Period: **\$38,622,352.16**

All Drugs Total Payment for Period: **\$ 21,182,909.96**

Drug Name	Total Claim Count	Total Payment Amount	Total Ingredient Cost	Total U & C Amount	Avg Quantity Per Rx	Avg Days Supply Per Rx	Avg Payment Per Rx	% Total Payment	Accumulative Payment %
QUETIAPINE FUMARATE	5,150	\$ 1,929,633.59	\$ 2,218,023.40	\$ 3,055,644.48	44.56	28.93	\$ 374.69	9.1%	9.1%
ARIPIPRAZOLE	3,246	\$ 1,727,788.09	\$ 1,946,512.69	\$ 2,585,000.02	33.39	28.11	\$ 532.28	8.2%	17.3%
ANTIHEMOPHILIC FACTOR RAHF-PFM	9	\$ 1,340,503.58	\$ 1,340,460.74	\$ 1,878,567.54	104,299.78	27.33	\$ 148,944.84	6.3%	23.6%
PALIVIZUMAB	619	\$ 1,297,457.94	\$ 1,410,208.43	\$ 1,930,153.30	1.01	28.50	\$ 2,096.05	6.1%	29.7%
OLANZAPINE	2,224	\$ 878,547.17	\$ 1,012,930.04	\$ 1,882,622.45	34.70	28.01	\$ 395.03	4.1%	33.9%
MONTELUKAST SODIUM	5,187	\$ 678,468.66	\$ 768,482.52	\$ 1,003,514.45	30.51	30.38	\$ 130.80	3.2%	37.1%
ZIPRASIDONE HCL	1,735	\$ 651,389.36	\$ 726,761.37	\$ 982,042.19	48.33	27.12	\$ 375.44	3.1%	40.1%
OXYCODONE HCL	7,500	\$ 639,749.65	\$ 735,387.97	\$ 1,435,382.62	115.34	26.15	\$ 85.30	3.0%	43.2%
FLUTICASONE-SALMETEROL	3,563	\$ 622,912.89	\$ 739,279.52	\$ 1,063,764.68	57.81	30.06	\$ 174.83	2.9%	46.1%
ANTIHEMOPHILIC FACTOR/VON WILLEBRAND FACTOR COMPLEX (HUMAN)*	33	\$ 509,886.10	\$ 509,733.78	\$ 1,743,184.32	13,981.06	19.88	\$ 15,451.09	2.4%	48.5%
TRASTUZUMAB	113	\$ 501,278.70	\$ 501,226.34	\$ 609,671.25	129.00	3.01	\$ 4,436.09	2.4%	50.9%
ALBUTEROL SULFATE	15,337	\$ 483,380.41	\$ 480,453.44	\$ 848,764.30	68.93	20.39	\$ 31.52	2.3%	53.2%
PEGFILGRASTIM	122	\$ 447,366.56	\$ 447,290.40	\$ 1,053,032.47	0.60	3.62	\$ 3,666.94	2.1%	55.3%
INSULIN GLARGINE	2,556	\$ 411,766.18	\$ 530,146.64	\$ 661,906.07	18.33	32.52	\$ 161.10	1.9%	57.2%
GLUCOSE BLOOD	3,545	\$ 392,204.52	\$ 398,829.08	\$ 479,790.94	102.78	30.18	\$ 110.64	1.9%	59.1%
HYDROCODONE-ACETAMINOPHEN	22,733	\$ 356,936.08	\$ 324,195.76	\$ 1,082,031.50	88.16	19.55	\$ 15.70	1.7%	60.8%
ESOMEPRAZOLE MAGNESIUM	2,635	\$ 354,407.41	\$ 441,159.03	\$ 625,187.98	32.40	29.58	\$ 134.50	1.7%	62.4%
AMPHETAMINE-DEXTROAMPHETAMINE	2,532	\$ 337,672.90	\$ 347,922.30	\$ 446,686.16	41.75	29.26	\$ 133.36	1.6%	64.0%
EMTRICITABINE-TENOFOVIR DISOPROXIL FUMARATE	389	\$ 334,171.29	\$ 361,533.93	\$ 518,448.50	28.53	28.58	\$ 859.05	1.6%	65.6%
PALIPERIDONE PALMITATE	335	\$ 331,197.42	\$ 371,687.08	\$ 503,754.47	1.18	26.69	\$ 988.65	1.6%	67.2%
MORPHINE SULFATE	5,066	\$ 328,230.31	\$ 342,600.13	\$ 679,372.47	80.08	20.99	\$ 64.79	1.5%	68.7%
EFAVIRENZ-EMTRICITABINE-TENOFOVIR DISOPROXIL FUMARATE	232	\$ 312,334.44	\$ 359,107.20	\$ 503,368.60	30.26	30.26	\$ 1,346.27	1.5%	70.2%
METHYLPHENIDATE HCL	2,542	\$ 308,423.05	\$ 316,143.77	\$ 393,047.89	39.73	28.57	\$ 121.33	1.5%	71.6%
TOBRAMYCIN	72	\$ 295,642.24	\$ 343,387.22	\$ 409,040.03	259.93	27.06	\$ 4,106.14	1.4%	73.0%
DOXERCALCIFEROL	5,357	\$ 288,300.99	\$ 288,557.83	\$ 3,286,077.75	146.21	1.13	\$ 53.82	1.4%	74.4%
CLOPIDOGREL BISULFATE	2,977	\$ 276,243.70	\$ 481,937.00	\$ 741,258.46	32.59	32.60	\$ 92.79	1.3%	75.7%
EPOETIN ALFA	3,438	\$ 265,886.62	\$ 268,045.55	\$ 3,247,088.28	1.71	1.08	\$ 77.34	1.3%	77.0%
IRON SUCROSE	2,423	\$ 265,573.14	\$ 266,008.58	\$ 1,601,376.06	328.28	1.00	\$ 109.61	1.3%	78.2%
TIOTROPIUM BROMIDE MONOHYDRATE	1,810	\$ 260,862.93	\$ 356,223.18	\$ 561,678.39	31.70	31.06	\$ 144.12	1.2%	79.4%
MULTI-INGREDIENT COMPOUND	2,111	\$ 250,509.27	\$ 224,985.47	\$ 768,994.61	144.38	9.76	\$ 118.67	1.2%	80.6%
PALIPERIDONE	468	\$ 244,967.97	\$ 269,243.72	\$ 377,110.77	38.02	29.29	\$ 523.44	1.2%	81.8%
DULOXETINE HCL	1,688	\$ 238,660.61	\$ 301,690.46	\$ 452,653.71	38.63	29.54	\$ 141.39	1.1%	82.9%
RISPERIDONE MICROSPPHERES	351	\$ 233,069.99	\$ 244,724.12	\$ 310,277.11	1.81	20.93	\$ 664.02	1.1%	84.0%
OXYCODONE W/ ACETAMINOPHEN	8,280	\$ 231,786.86	\$ 246,732.53	\$ 904,270.65	84.23	18.09	\$ 27.99	1.1%	85.1%
BUDESONIDE (INHALATION)	755	\$ 220,072.52	\$ 241,912.81	\$ 266,176.27	91.21	27.16	\$ 291.49	1.0%	86.1%
DORNASE ALFA	89	\$ 213,931.01	\$ 238,253.96	\$ 281,085.75	89.16	29.76	\$ 2,403.72	1.0%	87.2%
SOMATROPIN	96	\$ 211,648.01	\$ 239,193.65	\$ 375,052.95	7.14	27.49	\$ 2,204.67	1.0%	88.2%
DEFERASIROX	37	\$ 211,572.50	\$ 211,396.38	\$ 354,858.90	85.95	30.00	\$ 5,718.18	1.0%	89.1%
IDURSULFASE	12	\$ 209,156.68	\$ 209,099.56	\$ 273,333.06	19.50	15.75	\$ 17,429.72	1.0%	90.1%
RISPERIDONE	6,261	\$ 206,966.16	\$ 204,696.17	\$ 1,310,243.09	47.70	27.81	\$ 33.06	1.0%	91.1%
INTERFERON BETA-1A	74	\$ 202,764.02	\$ 242,270.42	\$ 330,717.54	4.95	28.73	\$ 2,740.05	1.0%	92.1%
TELAPREVIR	15	\$ 200,803.02	\$ 233,458.55	\$ 398,966.05	168.00	28.00	\$ 13,386.87	0.9%	93.0%
IPRATROPIUM-ALBUTEROL	1,713	\$ 196,740.71	\$ 225,304.56	\$ 372,751.11	86.01	21.52	\$ 114.85	0.9%	93.9%
GLATIRAMER ACETATE	83	\$ 191,667.05	\$ 227,209.61	\$ 284,902.08	1.00	19.87	\$ 2,309.24	0.9%	94.9%
LISDEXAMFETAMINE DIMESYLATE	1,229	\$ 190,010.35	\$ 197,404.14	\$ 244,197.65	30.36	29.43	\$ 154.61	0.9%	95.7%
DIVALPROEX SODIUM	3,920	\$ 184,580.07	\$ 190,325.95	\$ 745,235.40	93.41	29.65	\$ 47.09	0.9%	96.6%
GUANFACINE HCL (ADHD)	1,033	\$ 183,548.45	\$ 187,822.20	\$ 229,377.51	31.04	28.94	\$ 177.68	0.9%	97.5%
INSULIN ASPART	1,072	\$ 180,188.83	\$ 235,612.38	\$ 293,424.98	15.56	27.84	\$ 168.09	0.9%	98.3%
MOMETASONE FUROATE (NASAL)	1,870	\$ 177,679.10	\$ 199,972.25	\$ 277,008.63	17.35	30.05	\$ 95.02	0.8%	99.2%
ENOXAPARIN SODIUM	536	\$ 174,370.86	\$ 196,524.29	\$ 330,387.53	16.99	6.46	\$ 325.32	0.8%	100.0%

Nevada Medicaid
Top 50 All Drugs Ranked by Claim Count
For Service Period 01-01-2012 Through 03-31-2012

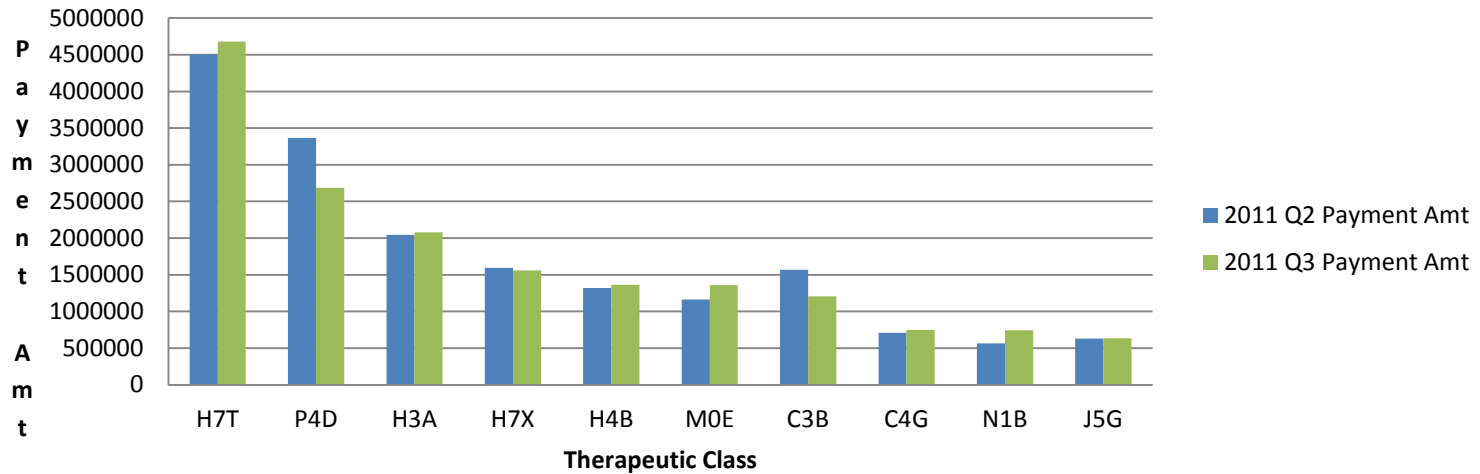
Grand Total Payment Amount for Period: **\$38,622,352.16**

All Drugs Total Payment for Period: **\$ 10,176,586.51**

Drug Name	Total Claim Count	Total Payment Amount	Total Ingredient Cost	Total U & C Amount	Avg Quantity Per Rx	Avg Days Supply Per Rx	Avg Payment Per Rx	% Total Payment	Accumulative Payment %
HYDROCODONE-ACETAMINOPHEN	22,733	\$ 356,936.08	\$ 324,195.76	\$ 1,082,031.50	88.16	19.55	\$ 15.70	3.5%	3.5%
ALBUTEROL SULFATE	15,337	\$ 483,380.41	\$ 480,453.44	\$ 848,764.30	68.93	20.39	\$ 31.52	4.7%	8.3%
LISINAPRIL	10,275	\$ 49,239.06	\$ 25,688.44	\$ 262,606.55	38.21	33.87	\$ 4.79	0.5%	8.7%
ALPRAZOLAM	10,193	\$ 99,706.91	\$ 52,765.58	\$ 402,971.19	65.66	26.20	\$ 9.78	1.0%	9.7%
OXYCODONE W/ ACETAMINOPHEN	8,280	\$ 231,786.86	\$ 246,732.53	\$ 904,270.65	84.23	18.09	\$ 27.99	2.3%	12.0%
SIMVASTATIN	8,027	\$ 35,931.70	\$ 26,943.90	\$ 554,292.92	32.99	32.90	\$ 4.48	0.4%	12.4%
OXYCODONE HCL	7,500	\$ 639,749.65	\$ 735,387.97	\$ 1,435,382.62	115.34	26.15	\$ 85.30	6.3%	18.6%
LEVOTHYROXINE SODIUM	7,468	\$ 54,694.07	\$ 39,098.44	\$ 114,543.88	34.33	33.98	\$ 7.32	0.5%	19.2%
AMOXICILLIN	7,321	\$ 63,066.95	\$ 32,629.78	\$ 107,536.66	97.15	9.35	\$ 8.61	0.6%	19.8%
GABAPENTIN	7,074	\$ 151,330.94	\$ 157,497.90	\$ 818,388.74	96.87	30.65	\$ 21.39	1.5%	21.3%
AZITHROMYCIN	7,001	\$ 127,784.49	\$ 108,339.46	\$ 334,387.64	85.55	5.05	\$ 18.25	1.3%	22.5%
AMLODIPINE BESYLATE	6,900	\$ 33,430.16	\$ 24,140.86	\$ 352,092.08	33.73	32.51	\$ 4.84	0.3%	22.9%
METFORMIN HCL	6,603	\$ 46,832.45	\$ 39,940.57	\$ 244,409.12	72.17	34.42	\$ 7.09	0.5%	23.3%
RISPERIDONE	6,261	\$ 206,966.16	\$ 204,696.17	\$ 1,310,243.09	47.70	27.81	\$ 33.06	2.0%	25.4%
IBUPROFEN	6,260	\$ 40,690.46	\$ 18,505.88	\$ 100,418.22	82.67	18.13	\$ 6.50	0.4%	25.8%
ZOLPIDEM TARTRATE	5,972	\$ 41,538.32	\$ 26,512.42	\$ 391,932.01	28.75	28.91	\$ 6.96	0.4%	26.2%
CARISOPRODOL	5,418	\$ 47,888.59	\$ 36,948.32	\$ 247,100.33	85.08	28.60	\$ 8.84	0.5%	26.6%
DOXERCALCIFEROL	5,357	\$ 288,300.99	\$ 288,557.83	\$ 3,286,077.75	146.21	1.13	\$ 53.82	2.8%	29.5%
MONTELUKAST SODIUM	5,187	\$ 678,468.66	\$ 768,482.52	\$ 1,003,514.45	30.51	30.38	\$ 130.80	6.7%	36.1%
QUETIAPINE FUMARATE	5,150	\$ 1,929,633.59	\$ 2,218,023.40	\$ 3,055,644.48	44.56	28.93	\$ 374.69	19.0%	55.1%
MORPHINE SULFATE	5,066	\$ 328,230.31	\$ 342,600.13	\$ 679,372.47	80.08	20.99	\$ 64.79	3.2%	58.3%
RANITIDINE HCL	4,959	\$ 41,405.13	\$ 27,054.25	\$ 251,258.86	62.33	30.02	\$ 8.35	0.4%	58.7%
FUROSEMIDE	4,504	\$ 18,056.20	\$ 7,208.81	\$ 54,712.95	42.57	31.60	\$ 4.01	0.2%	58.9%
TRAZODONE HCL	4,440	\$ 32,672.77	\$ 20,048.27	\$ 103,817.73	41.42	29.49	\$ 7.36	0.3%	59.2%
CLONAZEPAM	4,406	\$ 38,207.63	\$ 19,919.41	\$ 169,192.02	60.10	27.53	\$ 8.67	0.4%	59.6%
LORAZEPAM	4,395	\$ 34,180.30	\$ 17,461.05	\$ 159,767.77	55.05	18.10	\$ 7.78	0.3%	59.9%
METOPROLOL TARTRATE	4,285	\$ 18,619.10	\$ 8,284.81	\$ 77,592.00	58.35	30.69	\$ 4.35	0.2%	60.1%
CITALOPRAM HYDROBROMIDE	4,191	\$ 24,800.99	\$ 11,016.84	\$ 179,710.07	32.59	29.77	\$ 5.92	0.2%	60.4%
OMEPRAZOLE	4,086	\$ 21,319.83	\$ 38,700.62	\$ 439,127.67	38.82	32.63	\$ 5.22	0.2%	60.6%
DIVALPROEX SODIUM	3,920	\$ 184,580.07	\$ 190,325.95	\$ 745,235.40	93.41	29.65	\$ 47.09	1.8%	62.4%
CLONIDINE HCL	3,875	\$ 50,834.18	\$ 46,112.15	\$ 114,547.65	54.56	29.12	\$ 13.12	0.5%	62.9%
SERTRALINE HCL	3,831	\$ 26,098.98	\$ 14,170.82	\$ 201,246.15	36.21	29.33	\$ 6.81	0.3%	63.1%
CYCLOBENZAPRINE HCL	3,735	\$ 25,584.90	\$ 12,863.42	\$ 139,863.54	59.54	25.30	\$ 6.85	0.3%	63.4%
DIAZEPAM	3,698	\$ 26,288.33	\$ 9,522.58	\$ 74,474.71	60.62	25.02	\$ 7.11	0.3%	63.7%
ONDANSETRON HCL	3,671	\$ 22,477.03	\$ 17,861.57	\$ 483,056.40	10.20	3.01	\$ 6.12	0.2%	63.9%
LORATADINE	3,638	\$ 24,461.25	\$ 7,730.32	\$ 53,908.47	40.76	28.88	\$ 6.72	0.2%	64.1%
FLUTICASON PROPRIONATE (NASAL)	3,574	\$ 73,677.98	\$ 75,637.14	\$ 247,057.16	18.28	30.02	\$ 20.61	0.7%	64.8%
FLUTICASON-SALMETEROL	3,563	\$ 622,912.89	\$ 739,279.52	\$ 1,063,764.68	57.81	30.06	\$ 174.83	6.1%	71.0%
GLUCOSE BLOOD	3,545	\$ 392,204.52	\$ 398,829.08	\$ 479,790.94	102.78	30.18	\$ 110.64	3.9%	74.8%
TEMAZEPAM	3,490	\$ 57,879.55	\$ 43,273.30	\$ 110,384.41	26.01	24.76	\$ 16.58	0.6%	75.4%
HYDROCHLOROTHIAZIDE	3,484	\$ 14,127.17	\$ 4,781.16	\$ 40,507.09	34.70	34.51	\$ 4.05	0.1%	75.5%
EPOETIN ALFA	3,438	\$ 265,886.62	\$ 268,045.55	\$ 3,247,088.28	1.71	1.08	\$ 77.34	2.6%	78.1%
ASPIRIN	3,417	\$ 12,842.78	\$ 803.98	\$ 21,936.39	30.35	29.16	\$ 3.76	0.1%	78.3%
PREDNISON	3,410	\$ 15,407.68	\$ 4,952.01	\$ 40,509.81	61.62	14.51	\$ 4.52	0.2%	78.4%
FLUOXETINE HCL	3,383	\$ 30,900.49	\$ 23,029.61	\$ 186,836.31	41.16	29.97	\$ 9.13	0.3%	78.7%
ARIPRAZOLE	3,246	\$ 1,727,788.09	\$ 1,946,512.69	\$ 2,585,000.02	33.39	28.11	\$ 532.28	17.0%	95.7%
TRAMADOL HCL	3,187	\$ 29,081.73	\$ 21,731.14	\$ 139,409.91	82.22	20.77	\$ 9.13	0.3%	96.0%
FAMOTIDINE	3,161	\$ 25,482.72	\$ 18,195.74	\$ 148,346.10	53.72	28.14	\$ 8.06	0.3%	96.2%
AMOXICILLIN & POT CLAVULANATE	3,063	\$ 106,977.09	\$ 102,084.21	\$ 224,543.39	67.32	9.93	\$ 34.93	1.1%	97.3%
CLOPIDOGREL BISULFATE	2,977	\$ 276,243.70	\$ 481,937.00	\$ 741,258.46	32.59	32.60	\$ 92.79	2.7%	100.0%

Query run 7/10/2012

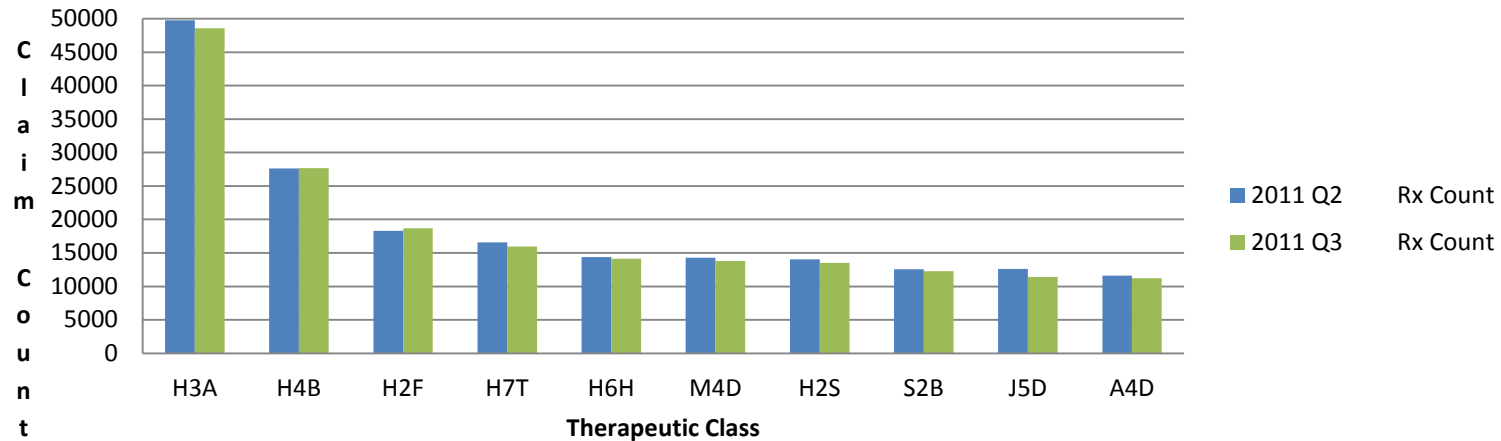
Nevada Medicaid
Top 10 Therapeutic Classes Ranked by Payment Amount
For Service Period 04-01-2012 Through 06-30-2012



Class	Specific Therapeutic Class Description	2012 Q1 Rx Count	2012 Q2 Rx Count	2012 Q1 Payment Amt	2012 Q2 Payment Amt	% Change in Payment Amt
H7T	ANTIPSYCHOTICS,ATYPICAL,DOPAMINE,& SEROTONIN ANTAG	17,660	17,395	\$ 4,783,774.81	\$ 3,123,832.27	-34.70%
H3A	ANALGESICS, NARCOTICS	52,149	52,630	\$ 1,993,149.14	\$ 1,941,639.90	-2.58%
M0E	ANTIHEMOPHILIC FACTORS	48	55	\$ 1,968,820.26	\$ 1,804,459.76	-8.35%
H7X	ANTIPSYCHOTICS, ATYP, D2 PARTIAL AGONIST/5HT MIXED	3,246	3,064	\$ 1,727,788.09	\$ 1,733,808.97	0.35%
H4B	ANTICONVULSANTS	29,898	29,862	\$ 1,419,954.77	\$ 1,475,934.41	3.94%
C4G	INSULINS	6,109	6,107	\$ 977,996.74	\$ 923,304.54	-5.59%
J5G	BETA-ADRENERGIC AND GLUCOCORTICOID COMBINATIONS	4,523	4,437	\$ 734,023.52	\$ 757,758.46	3.23%
Z4B	LEUKOTRIENE RECEPTOR ANTAGONISTS	5,239	5,189	\$ 680,945.29	\$ 698,339.62	0.00%
J5B	ADRENERGICS, AROMATIC, NON-CATECHOLAMINE	3,915	3,902	\$ 543,403.12	\$ 552,734.63	1.72%
H0E	AGENTS TO TREAT MULTIPLE SCLEROSIS	189	148	\$ 496,420.27	\$ 523,863.52	5.53%

Query run 7/10/2012

Nevada Medicaid
Top 10 Therapeutic Classes Ranked by Claim Count
For Service Period 04-01-2012 Through 06-30-2012



Class	Specific Therapeutic Class Description	2012 Q1 Rx Count	2012 Q2 Rx Count	%Change in Rx Count	2012 Q1 Payment Amt	2012 Q2 Payment Amt
H3A	ANALGESICS, NARCOTICS	52,149	52,630	0.92%	\$ 1,993,149.14	\$ 1,941,639.90
H4B	ANTICONVULSANTS	29,898	29,862	-0.12%	\$ 1,419,954.77	\$ 1,475,934.41
H2F	ANTI-ANXIETY DRUGS	18,945	18,966	0.11%	\$ 174,897.61	\$ 174,157.98
H7T	ANTIPSYCHOTICS, ATYPICAL, DOPAMINE, & SEROTONIN ANTAG	17,660	17,395	-1.50%	\$ 4,783,774.81	\$ 3,123,832.27
M4D	ANTIHYPERTENSIVES - HMG COA REDUCTASE INHIBITORS	14,916	14,839	-0.52%	\$ 352,108.74	\$ 339,520.08
H2S	SELECTIVE SEROTONIN REUPTAKE INHIBITOR (SSRIS)	14,249	13,928	-2.25%	\$ 194,525.73	\$ 177,965.82
J5D	BETA-ADRENERGIC AGENTS	16,165	13,750	-14.94%	\$ 576,235.76	\$ 522,528.88
H6H	SKELETAL MUSCLE RELAXANTS	13,616	12,883	-5.38%	\$ 136,033.64	\$ 138,484.96
S2B	NSAIDS, CYCLOOXYGENASE INHIBITOR - TYPE	12,974	12,846	-0.99%	\$ 107,675.38	\$ 107,010.81
A4D	ANTIHYPERTENSIVES, ACE INHIBITORS	11,858	11,463	-3.33%	\$ 56,462.90	\$ 54,363.04

Query run 7/10/2012

Nevada Medicaid
Top 50 All Drugs Ranked by Payment
For Service Period 04-01-2012 Through 06-30-2012

Grand Total Payment Amount for Period: **\$33,501,486.32**

All Drugs Total Payment for Period: **\$ 17,498,371.58**

Drug Name	Total Claim Count	Total Payment Amount	Total Ingredient Cost	Total U & C Amount	Avg Quantity Per Rx	Avg Days Supply Per Rx	Avg Payment Per Rx	% Total Payment	Accumulative Payment %
ARIPIRAZOLE	3,064	\$ 1,733,808.97	\$ 1,963,320.77	\$ 2,530,217.70	34.22	28.86	\$ 565.86	9.9%	9.9%
ANTIHEMOPHILIC FACTOR RAHF-PFM	13	\$ 1,169,146.79	\$ 1,169,084.91	\$ 1,691,088.97	63,028.69	24.69	\$ 89,934.37	6.7%	16.6%
MONTELUKAST SODIUM	5,131	\$ 695,021.77	\$ 791,406.09	\$ 999,939.67	30.57	30.43	\$ 135.46	4.0%	20.6%
OXYCODONE HCL	7,780	\$ 666,476.56	\$ 767,313.62	\$ 1,410,125.95	114.23	25.74	\$ 85.67	3.8%	24.4%
QUETIAPINE FUMARATE	5,137	\$ 640,852.15	\$ 764,521.38	\$ 2,555,614.37	44.15	28.57	\$ 124.75	3.7%	28.0%
FLUTICASONE-SALMETEROL	3,457	\$ 634,350.98	\$ 770,883.90	\$ 1,061,543.45	58.24	30.39	\$ 183.50	3.6%	31.7%
ZIPRASIDONE HCL	1,663	\$ 498,226.05	\$ 543,218.65	\$ 881,098.27	48.96	27.59	\$ 299.59	2.8%	34.5%
ANTIHEMOPHILIC FACTOR/VON WILLEBRAND FACTOR COMPLEX (HUMAN)*	32	\$ 447,959.35	\$ 447,807.03	\$ 1,476,242.40	12,642.38	20.41	\$ 13,998.73	2.6%	37.1%
OLANZAPINE	2,075	\$ 433,261.40	\$ 518,607.38	\$ 1,616,054.89	34.58	28.17	\$ 208.80	2.5%	39.5%
ALBUTEROL SULFATE	12,977	\$ 429,890.81	\$ 440,748.98	\$ 720,470.12	61.14	20.84	\$ 33.13	2.5%	42.0%
PALIPERIDONE PALMITATE	371	\$ 410,225.89	\$ 447,494.19	\$ 564,031.30	1.19	26.85	\$ 1,105.73	2.3%	44.3%
GLUCOSE BLOOD	3,739	\$ 407,621.49	\$ 418,784.69	\$ 513,558.99	102.86	30.67	\$ 109.02	2.3%	46.7%
INSULIN GLARGINE	2,483	\$ 376,418.05	\$ 503,496.07	\$ 655,313.18	17.08	32.98	\$ 151.60	2.2%	48.8%
ESOMEPRAZOLE MAGNESIUM	2,499	\$ 369,694.67	\$ 446,938.49	\$ 597,092.44	32.27	29.90	\$ 147.94	2.1%	50.9%
EMTRICITABINE-TENOFOVIR DISOPROXIL FUMARATE	345	\$ 364,181.21	\$ 368,637.61	\$ 467,377.66	29.08	29.01	\$ 1,055.60	2.1%	53.0%
HYDROCODONE-ACETAMINOPHEN	22,735	\$ 354,815.16	\$ 338,236.72	\$ 1,079,606.78	86.53	19.31	\$ 15.61	2.0%	55.0%
PEGFILGRASTIM	96	\$ 354,214.72	\$ 354,176.64	\$ 812,438.47	0.60	2.67	\$ 3,689.74	2.0%	57.1%
AMPHETAMINE-DEXTRAMPHETAMINE	2,521	\$ 345,731.91	\$ 356,197.36	\$ 459,388.74	42.81	29.40	\$ 137.14	2.0%	59.0%
METHYLPHENIDATE HCL	2,470	\$ 323,786.11	\$ 334,322.97	\$ 402,760.41	39.97	28.97	\$ 131.09	1.9%	60.9%
MORPHINE SULFATE	5,266	\$ 322,606.96	\$ 338,414.04	\$ 657,453.76	51.10	19.95	\$ 61.26	1.8%	62.7%
TRASTUZUMAB	99	\$ 316,774.59	\$ 316,707.95	\$ 535,272.85	4.86	4.59	\$ 3,199.74	1.8%	64.5%
EFAVIRENZ-EMTRICITABINE-TENOFOVIR DISOPROXIL FUMARATE	185	\$ 286,103.88	\$ 321,121.29	\$ 417,480.72	30.65	30.65	\$ 1,546.51	1.6%	66.2%
TIOTROPIUM BROMIDE MONOHYDRATE	1,815	\$ 278,536.65	\$ 385,628.24	\$ 568,471.89	31.45	31.25	\$ 153.46	1.6%	67.8%
EPOETIN ALFA	4,392	\$ 270,201.71	\$ 274,165.85	\$ 3,915,013.80	1.02	1.05	\$ 61.52	1.5%	69.3%
PALIPERIDONE	439	\$ 266,415.69	\$ 293,784.76	\$ 386,808.22	37.98	29.48	\$ 606.87	1.5%	70.8%
TELAPREVIR	15	\$ 249,484.42	\$ 249,417.78	\$ 284,986.40	168.00	28.00	\$ 16,632.29	1.4%	72.3%
RISPERIDONE MICROSPHERES	350	\$ 241,859.68	\$ 254,344.45	\$ 311,225.39	1.68	20.53	\$ 691.03	1.4%	73.7%
DULOXETINE HCL	1,581	\$ 230,900.85	\$ 296,300.16	\$ 423,892.94	39.11	30.43	\$ 146.05	1.3%	75.0%
OXYCODONE W/ ACETAMINOPHEN	8,511	\$ 229,950.43	\$ 250,388.43	\$ 848,508.65	79.50	17.41	\$ 27.02	1.3%	76.3%
SOMATROPIN	100	\$ 229,950.30	\$ 260,782.81	\$ 401,694.42	7.23	28.79	\$ 2,299.50	1.3%	77.6%
IMMUNE GLOBULIN (HUMAN) IV	89	\$ 226,984.93	\$ 226,946.85	\$ 742,353.54	455.57	3.03	\$ 2,550.39	1.3%	78.9%
INTERFERON BETA-1A	66	\$ 226,241.40	\$ 236,313.68	\$ 310,971.04	4.85	28.12	\$ 3,427.90	1.3%	80.2%
CLOPIDOGREL BISULFATE	2,684	\$ 223,539.23	\$ 363,028.80	\$ 628,613.30	32.35	32.36	\$ 83.29	1.3%	81.5%
DORNASE ALFA	87	\$ 209,891.04	\$ 224,949.01	\$ 269,211.04	85.92	29.25	\$ 2,412.54	1.2%	82.7%
GLATIRAMER ACETATE	55	\$ 209,023.29	\$ 224,586.63	\$ 279,504.29	1.00	27.89	\$ 3,800.42	1.2%	83.9%
GUANFACINE HCL (ADHD)	1,138	\$ 205,434.94	\$ 211,240.21	\$ 258,230.14	31.62	29.33	\$ 180.52	1.2%	85.0%
TOBRAMYCIN	52	\$ 203,318.36	\$ 241,975.88	\$ 288,568.78	251.92	25.79	\$ 3,909.97	1.2%	86.2%
RISPERIDONE	5,997	\$ 197,671.08	\$ 195,501.11	\$ 1,268,374.09	47.93	28.21	\$ 32.96	1.1%	87.3%
ENOXAPARIN SODIUM	640	\$ 195,066.63	\$ 206,744.38	\$ 347,436.16	5.07	5.88	\$ 304.79	1.1%	88.4%
LURASIDONE HCL	578	\$ 194,787.74	\$ 208,818.71	\$ 262,389.28	24.27	23.39	\$ 337.00	1.1%	89.6%
IDURSULFASE	6	\$ 193,043.58	\$ 193,015.02	\$ 252,307.44	36.00	28.00	\$ 32,173.93	1.1%	90.7%
LISDEXAMFETAMINE DIMESYLATE	1,236	\$ 190,966.00	\$ 200,309.46	\$ 248,051.64	30.51	29.66	\$ 154.50	1.1%	91.7%
IPRATROPIUM-ALBUTEROL	1,527	\$ 187,614.79	\$ 216,883.85	\$ 329,489.65	73.30	22.78	\$ 122.86	1.1%	92.8%
MULTI-INGREDIENT COMPOUND	2,268	\$ 185,538.94	\$ 166,562.22	\$ 705,329.93	143.96	9.61	\$ 81.81	1.1%	93.9%
MOMETASONE FUROATE (NASAL)	1,857	\$ 184,664.32	\$ 211,752.22	\$ 279,492.30	17.28	30.04	\$ 99.44	1.1%	94.9%
DEFERASIROX	30	\$ 182,616.19	\$ 182,473.39	\$ 267,840.91	94.53	29.53	\$ 6,087.21	1.0%	96.0%
IMIGLUCERASE	11	\$ 181,237.00	\$ 181,184.64	\$ 199,214.69	10.18	19.09	\$ 16,476.09	1.0%	97.0%
RALTEGRAVIR POTASSIUM	188	\$ 174,821.98	\$ 177,162.15	\$ 223,230.75	56.17	28.09	\$ 929.90	1.0%	98.0%
DIVALPROEX SODIUM	3,731	\$ 173,785.56	\$ 181,617.21	\$ 680,165.62	90.12	29.40	\$ 46.58	1.0%	99.0%
DOCETAXEL	51	\$ 173,655.38	\$ 173,631.58	\$ 226,566.32	36.12	2.96	\$ 3,405.01	1.0%	100.0%

Nevada Medicaid
Top 50 All Drugs Ranked by Claim Count
For Service Period 04-01-2012 Through 06-30-2012

Grand Total Payment Amount for Period: **\$33,501,486.32**

All Drugs Total Payment for Period: **\$ 8,222,758.11**

Drug Name	Total Claim Count	Total Payment Amount	Total Ingredient Cost	Total U & C Amount	Avg Quantity Per Rx	Avg Days Supply Per Rx	Avg Payment Per Rx	% Total Payment	Accumulative Payment %
HYDROCODONE-ACETAMINOPHEN *	22,735	\$ 354,815.16	\$ 338,236.72	\$ 1,079,606.78	86.53	19.31	\$ 15.61	4.3%	4.3%
ALBUTEROL SULFATE *	12,977	\$ 429,890.81	\$ 440,748.98	\$ 720,470.12	61.14	20.84	\$ 33.13	5.2%	9.5%
ALPRAZOLAM *	10,188	\$ 100,285.83	\$ 53,681.32	\$ 394,111.43	64.11	26.03	\$ 9.84	1.2%	10.8%
LISINAPRIL *	9,963	\$ 47,467.35	\$ 30,541.10	\$ 247,267.08	37.86	34.03	\$ 4.76	0.6%	11.3%
OXYCODONE W/ ACETAMINOPHEN *	8,511	\$ 229,950.43	\$ 250,388.43	\$ 848,508.65	79.50	17.41	\$ 27.02	2.8%	14.1%
SIMVASTATIN *	7,787	\$ 35,735.80	\$ 31,391.97	\$ 450,581.36	33.00	32.93	\$ 4.59	0.4%	14.6%
OXYCODONE HCL *	7,780	\$ 666,476.56	\$ 767,313.62	\$ 1,410,125.95	114.23	25.74	\$ 85.67	8.1%	22.7%
LEVOTHYROXINE SODIUM *	7,440	\$ 54,042.54	\$ 43,836.66	\$ 113,307.88	34.36	34.19	\$ 7.26	0.7%	23.3%
GABAPENTIN *	7,222	\$ 158,449.20	\$ 167,259.92	\$ 816,179.73	97.44	30.56	\$ 21.94	1.9%	25.3%
AMLODIPINE BESYLATE *	6,921	\$ 33,707.11	\$ 28,131.65	\$ 339,196.38	33.68	32.62	\$ 4.87	0.4%	25.7%
METFORMIN HCL *	6,467	\$ 47,438.06	\$ 43,241.71	\$ 231,494.50	72.77	34.93	\$ 7.34	0.6%	26.2%
IBUPROFEN *	6,170	\$ 38,471.75	\$ 19,014.06	\$ 96,046.70	66.63	18.15	\$ 6.24	0.5%	26.7%
RISPERIDONE *	5,997	\$ 197,671.08	\$ 195,501.11	\$ 1,268,374.09	47.93	28.21	\$ 32.96	2.4%	29.1%
ZOLPIDEM TARTRATE *	5,793	\$ 40,044.58	\$ 28,844.23	\$ 370,165.38	28.25	28.79	\$ 6.91	0.5%	29.6%
AMOXICILLIN *	5,455	\$ 45,291.99	\$ 24,223.78	\$ 80,175.78	86.83	9.08	\$ 8.30	0.6%	30.2%
DOXERCALCIFEROL *	5,325	\$ 63,953.44	\$ 66,393.68	\$ 2,137,004.69	1.89	1.15	\$ 12.01	0.8%	30.9%
MORPHINE SULFATE *	5,266	\$ 322,606.96	\$ 338,414.04	\$ 657,453.76	51.10	19.95	\$ 61.26	3.9%	34.9%
QUETIAPINE FUMARATE *	5,137	\$ 640,852.15	\$ 764,521.38	\$ 2,555,614.37	44.15	28.57	\$ 124.75	7.8%	42.7%
MONTELUKAST SODIUM *	5,131	\$ 695,021.77	\$ 791,406.09	\$ 999,939.67	30.57	30.43	\$ 135.46	8.5%	51.1%
CARISOPRODOL *	4,866	\$ 39,057.55	\$ 32,506.40	\$ 218,594.65	83.86	28.38	\$ 8.03	0.5%	51.6%
RANITIDINE HCL *	4,760	\$ 41,146.80	\$ 29,813.15	\$ 237,040.51	63.20	30.03	\$ 8.64	0.5%	52.1%
FUROSEMIDE *	4,560	\$ 17,992.56	\$ 9,807.29	\$ 55,195.80	39.97	31.45	\$ 3.95	0.2%	52.3%
CLONAZEPAM *	4,462	\$ 36,519.09	\$ 18,433.54	\$ 171,074.03	58.46	27.30	\$ 8.18	0.4%	52.7%
LORAZEPAM *	4,414	\$ 32,965.46	\$ 15,956.97	\$ 153,595.23	41.23	18.04	\$ 7.47	0.4%	53.1%
EPOTIN ALFA *	4,392	\$ 270,201.71	\$ 274,165.85	\$ 3,915,013.80	1.02	1.05	\$ 61.52	3.3%	56.4%
METOPROLOL TARTRATE *	4,300	\$ 18,731.68	\$ 10,525.07	\$ 78,454.13	55.32	30.46	\$ 4.36	0.2%	56.7%
TRAZODONE HCL *	4,277	\$ 30,745.34	\$ 19,688.58	\$ 95,414.19	41.26	29.39	\$ 7.19	0.4%	57.0%
AZITHROMYCIN *	4,125	\$ 73,905.42	\$ 63,938.45	\$ 201,486.05	11.69	5.18	\$ 17.92	0.9%	57.9%
OMEPRAZOLE *	4,124	\$ 21,536.20	\$ 46,351.34	\$ 453,835.61	38.49	32.50	\$ 5.22	0.3%	58.2%
CITALOPRAM HYDROBROMIDE *	4,099	\$ 24,470.55	\$ 12,434.46	\$ 161,346.17	32.34	29.54	\$ 5.97	0.3%	58.5%
ONDANSETRON HCL *	4,052	\$ 22,984.70	\$ 18,267.33	\$ 493,527.26	9.47	2.89	\$ 5.67	0.3%	58.8%
SERTRALINE HCL *	3,925	\$ 27,819.62	\$ 16,869.05	\$ 201,425.50	36.48	29.14	\$ 7.09	0.3%	59.1%
LORATADINE *	3,903	\$ 26,304.65	\$ 8,356.48	\$ 57,202.12	39.89	28.95	\$ 6.74	0.3%	59.4%
CLONIDINE HCL *	3,841	\$ 54,636.41	\$ 49,822.61	\$ 117,495.93	54.41	28.95	\$ 14.22	0.7%	60.1%
GLUCOSE BLOOD *	3,739	\$ 407,621.49	\$ 418,784.69	\$ 513,558.99	102.86	30.67	\$ 109.02	5.0%	65.0%
DIVALPROEX SODIUM *	3,731	\$ 173,785.56	\$ 181,617.21	\$ 680,165.62	90.12	29.40	\$ 46.58	2.1%	67.2%
DIAZEPAM *	3,675	\$ 24,682.23	\$ 8,241.88	\$ 75,653.30	58.45	24.61	\$ 6.72	0.3%	67.5%
TEMAZEPAM *	3,611	\$ 53,860.47	\$ 39,274.53	\$ 105,367.09	25.53	24.19	\$ 14.92	0.7%	68.1%
CYCLOBENZAPRINE HCL *	3,517	\$ 25,143.31	\$ 13,019.22	\$ 129,177.71	59.81	25.42	\$ 7.15	0.3%	68.4%
FLUTICASON PROPRIONATE (NASAL) *	3,506	\$ 73,895.74	\$ 76,371.62	\$ 236,354.39	16.25	29.67	\$ 21.08	0.9%	69.3%
FLUTICASON-SALMETEROL *	3,457	\$ 634,350.98	\$ 770,883.90	\$ 1,061,543.45	58.24	30.39	\$ 183.50	7.7%	77.0%
ASPIRIN *	3,400	\$ 13,201.76	\$ 830.07	\$ 20,664.11	31.62	30.55	\$ 3.88	0.2%	77.2%
HYDROCHLOROTHIAZIDE *	3,373	\$ 13,739.90	\$ 6,527.66	\$ 40,118.84	34.49	34.21	\$ 4.07	0.2%	77.4%
WARFARIN SODIUM *	3,287	\$ 23,638.06	\$ 21,264.62	\$ 61,647.08	25.64	20.48	\$ 7.19	0.3%	77.7%
FLUOXETINE HCL *	3,269	\$ 28,791.41	\$ 21,038.57	\$ 175,173.82	40.65	30.13	\$ 8.81	0.4%	78.0%
TRAMADOL HCL *	3,143	\$ 28,414.62	\$ 24,482.69	\$ 138,004.42	81.03	20.29	\$ 9.04	0.3%	78.3%
ARIPIRAZOLE *	3,064	\$ 1,733,808.97	\$ 1,963,320.77	\$ 2,530,217.70	34.22	28.86	\$ 565.86	21.1%	99.4%
FAMOTIDINE *	3,039	\$ 22,896.52	\$ 17,631.60	\$ 139,727.58	43.13	27.42	\$ 7.53	0.3%	99.7%
PREDNISONE *	2,964	\$ 12,969.53	\$ 4,669.90	\$ 33,448.07	30.84	15.49	\$ 4.38	0.2%	99.9%
ATENOLOL *	2,789	\$ 10,767.25	\$ 5,886.10	\$ 47,916.78	38.36	32.57	\$ 3.86	0.1%	100.0%

2012 Q1 Top 10 ProDUR Edits

Sum of COUNT(*) MNM Drug Name	Conflicting Claim Drug Name	YearMonth Filled			Grand Total
		201201	201202	201203	
WARFARIN SODIUM	WARFARIN SODIUM	321	316	393	1030
	SIMVASTATIN	295	240	259	794
	LEVOTHYROXINE SODIUM	135	154	196	485
	AMIODARONE HCL	94	88	77	259
	CLOPIDOGREL BISULFATE	78	89	36	203
	ALLOPURINOL	59	58	59	176
	ASPIRIN	45	51	43	139
	LOVASTATIN	33	30	34	97
	GEMFIBROZIL	13	21	39	73
	FENOFIBRATE	21	26	24	71
WARFARIN SODIUM Total		1094	1073	1160	3327
QUETIAPINE FUMARATE	QUETIAPINE FUMARATE	344	381	433	1158
	CITALOPRAM HYDROBROMIDE	232	295	137	664
	RISPERIDONE	117	115	97	329
	ZIPRASIDONE HCL	106	79	27	212
	ARIPIPRAZOLE	54	58	51	163
	HALOPERIDOL	34	59	35	128
	PALIPERIDONE	42	47	25	114
	OLANZAPINE	37	34	28	99
	PALIPERIDONE PALMITATE	27	33	27	87
	METHADONE HCL	33	26	15	74
QUETIAPINE FUMARATE Total		1026	1127	875	3028
HYDROCODONE-ACETAMINOPHEN	HYDROCODONE-ACETAMINOPHEN	193	188	380	761
	OXYCODONE W/ ACETAMINOPHEN	190	200	354	744
	OXYCODONE HCL	50	39	314	403
	TRAMADOL HCL	13	11	145	169
	BUTALBITAL-ACETAMINOPHEN-CAFFEINE	41	39	52	132
	MORPHINE SULFATE	31	38	50	119
	PROMETHAZINE W/CODEINE	30	23	50	103
	METHADONE HCL	9	17	63	89
	BUTALBITAL-ACETAMINOPHEN-CAFFEINE	13	18	19	50
	ACETAMINOPHEN W/ CODEINE	11	7	19	37
HYDROCODONE-ACETAMINOPHEN Total		581	580	1446	2607
ALBUTEROL SULFATE	ALBUTEROL SULFATE	226	220	1198	1644
	IPRATROPIUM-ALBUTEROL	80	73	111	264
	PROPRANOLOL HCL	42	42	31	115

ALBUTEROL SULFATE	FLUTICASONE-SALMETEROL	15	17	12	44
	TIMOLOL MALEATE (OPHTH)	7	22	8	37
	LEVALBUTEROL TARTRATE	5	11	20	36
	DORZOLAMIDE HCL-TIMOLOL MALEATE	5	4		9
	SOTALOL HCL	3	3	2	8
	BUDESONIDE-FORMOTEROL FUMARATE I	4	1	2	7
	BRIMONIDINE TARTRATE-TIMOLOL MALEA	2	2	2	6
	NADOLOL	4	2		6
ALBUTEROL SULFATE Total		393	397	1386	2176
RISPERIDONE	RISPERIDONE	300	266	255	821
	FLUOXETINE HCL	127	112	78	317
	QUETIAPINE FUMARATE	97	98	121	316
	ARIPIPIRAZOLE	63	77	53	193
	PAROXETINE HCL	44	56	32	132
	OLANZAPINE	43	41	43	127
	ZIPRASIDONE HCL	23	29	33	85
	CLOZAPINE	14	10	12	36
	HALOPERIDOL	11	10	12	33
	LURASIDONE HCL	6	4	12	22
RISPERIDONE Total		728	703	651	2082
SIMVASTATIN	AMLODIPINE BESYLATE	197	219	128	544
	WARFARIN SODIUM	172	190	174	536
	SIMVASTATIN	130	107	96	333
	FENOFIBRATE	125	103	51	279
	GEMFIBROZIL	50	46	21	117
	DILTIAZEM HCL COATED BEADS	43	45	22	110
	DILTIAZEM HCL	30	20	6	56
	DILTIAZEM HCL EXTENDED RELEASE BEA	15	10	12	37
	AMIODARONE HCL	10	15	7	32
	AMLODIPINE BESYLATE-BENAZEPRIL HCL	11	10	7	28
SIMVASTATIN Total		783	765	524	2072
OXYCODONE W/ ACETAMINOPHEN	HYDROCODONE-ACETAMINOPHEN	248	248	409	905
	OXYCODONE HCL	27	126	153	306
	OXYCODONE W/ ACETAMINOPHEN	35	73	100	208
	TRAMADOL HCL	4	59	57	120
	MORPHINE SULFATE	27	41	47	115
	METHADONE HCL	6	51	41	98
	BUTALBITAL-ACETAMINOPHEN-CAFFEINE	21	19	27	67
	PROMETHAZINE W/CODEINE	15	9	19	43
	HYDROMORPHONE HCL	9	5	17	31

OXYCODONE W/ ACETAMINOPHEN	ASPIRIN	8	10	6	24
OXYCODONE W/ ACETAMINOPHEN Total		400	641	876	1917
CITALOPRAM HYDROBROMIDE	QUETIAPINE FUMARATE	220	250	115	585
	CITALOPRAM HYDROBROMIDE	132	98	119	349
	OMEPRAZOLE	85	74	62	221
	TRAMADOL HCL	57	60	26	143
	ZIPRASIDONE HCL	57	59	24	140
	METHADONE HCL	32	27	13	72
	METOCLOPRAMIDE HCL	21	21	18	60
	HALOPERIDOL	22	18	10	50
	PALIPERIDONE	19	16	11	46
	DOXEPIN HCL	20	15	8	43
CITALOPRAM HYDROBROMIDE Total		665	638	406	1709
METHADONE HCL	ALPRAZOLAM	203	203	95	501
	OXYCODONE HCL	13	96	98	207
	DIAZEPAM	85	80	38	203
	CLONAZEPAM	66	61	37	164
	OXYCODONE W/ ACETAMINOPHEN	5	69	64	138
	QUETIAPINE FUMARATE	41	40	11	92
	TEMAZEPAM	41	37	12	90
	CITALOPRAM HYDROBROMIDE	40	37	9	86
	HYDROCODONE-ACETAMINOPHEN	6	7	65	78
	LORAZEPAM	24	28	14	66
METHADONE HCL Total		524	658	443	1625
CLONAZEPAM	DIVALPROEX SODIUM	182	206	109	497
	CLONAZEPAM	91	79	69	239
	ALPRAZOLAM	47	51	51	149
	METHADONE HCL	58	64	26	148
	TEMAZEPAM	32	33	39	104
	DIAZEPAM	37	44	22	103
	VALPROATE SODIUM	22	30	16	68
	LORAZEPAM	20	18	28	66
	LEVETIRACETAM	21	18	20	59
	LAMOTRIGINE	17	16	21	54
CLONAZEPAM Total		527	559	401	1487
Grand Total		6721	7141	8168	22030

2012 Q2 Top 10 ProDUR Edits

Sum of COUNT(*) MNM Drug Name	Conflicting Claim Drug Name	YearMonth Filled			Grand Total
		201204	201205	201206	
HYDROCODONE-ACETAMINOPHEN	HYDROCODONE-ACETAMINOPHEN	1945	2124	1736	5805
	OXYCODONE W/ ACETAMINOPHEN	536	514	506	1556
	OXYCODONE HCL	439	525	452	1416
	TRAMADOL HCL	211	207	195	613
	METHADONE HCL	73	95	115	283
	MORPHINE SULFATE	73	69	75	217
	BUTALBITAL-ACETAMINOPHEN-CAFFEINE	55	62	39	156
	PROMETHAZINE W/CODEINE	39	49	30	118
	ACETAMINOPHEN W/ CODEINE	34	35	36	105
	HYDROMORPHONE HCL	25	41	25	91
HYDROCODONE-ACETAMINOPHEN Total		3430	3721	3209	10360
ALBUTEROL SULFATE	ALBUTEROL SULFATE	1905	1926	1646	5477
	IPRATROPIUM-ALBUTEROL	189	168	166	523
	PROPRANOLOL HCL	73	44	44	161
	FLUTICASONE-SALMETEROL	22	21	29	72
	LEVALBUTEROL TARTRATE	10	15	13	38
	TIMOLOL MALEATE (OPHTH)	12	8	8	28
	LEVALBUTEROL HCL	3	3	10	16
	BUDESONIDE-FORMOTEROL FUMARATE DIHYC	6	5	4	15
	NADOLOL	3	5	6	14
	SOTALOL HCL	3	3	8	14
ALBUTEROL SULFATE Total		2226	2198	1934	6358
ALPRAZOLAM	ALPRAZOLAM	841	932	910	2683
	CARISOPRODOL	4	5	864	873
	METHADONE HCL	274	295	245	814
	TEMAZEPAM	173	189	150	512
	DIAZEPAM	85	97	93	275
	CLONAZEPAM	71	104	85	260
	LORAZEPAM	34	36	32	102
	RITONAVIR	16	9	13	38
	LOPINAVIR-RITONAVIR	9	10	6	25
	HYDROXYZINE PAMOATE	7	9	7	23
ALPRAZOLAM Total		1514	1686	2405	5605
OXYCODONE HCL	OXYCODONE HCL	586	648	564	1798
	HYDROCODONE-ACETAMINOPHEN	397	377	375	1149
	CARISOPRODOL		16	782	798

OXYCODONE HCL	OXYCODONE W/ ACETAMINOPHEN	156	140	121	417
	METHADONE HCL	127	109	112	348
	MORPHINE SULFATE	82	92	74	248
	TRAMADOL HCL	48	51	67	166
	HYDROMORPHONE HCL	38	34	35	107
	PROMETHAZINE W/CODEINE	31	17	24	72
	FENTANYL	24	17	17	58
OXYCODONE HCL Total		1489	1501	2171	5161
CARISOPRODOL	CARISOPRODOL	505	741	577	1823
	OXYCODONE HCL		30	1130	1160
	ALPRAZOLAM		12	1038	1050
	OXYCODONE W/ ACETAMINOPHEN		2	557	559
	CYCLOBENZAPRINE HCL	53	71	46	170
	BACLOFEN	38	42	31	111
	TIZANIDINE HCL	44	34	32	110
	HYDROMORPHONE HCL		1	77	78
	METHOCARBAMOL	16	17	10	43
	OXYMORPHONE HCL			36	36
CARISOPRODOL Total		656	950	3534	5140
OXYCODONE W/ ACETAMINOPHEN	HYDROCODONE-ACETAMINOPHEN	655	572	547	1774
	OXYCODONE W/ ACETAMINOPHEN	469	524	521	1514
	OXYCODONE HCL	178	181	156	515
	CARISOPRODOL		1	410	411
	METHADONE HCL	65	65	62	192
	TRAMADOL HCL	78	53	57	188
	MORPHINE SULFATE	67	56	56	179
	BUTALBITAL-ACETAMINOPHEN-CAFFEINE	26	30	19	75
	HYDROMORPHONE HCL	18	18	23	59
	BUTALBITAL-ACETAMINOPHEN-CAFFEINE W/ C	26	10	15	51
OXYCODONE W/ ACETAMINOPHEN Total		1582	1510	1866	4958
QUETIAPINE FUMARATE	QUETIAPINE FUMARATE	712	696	589	1997
	CITALOPRAM HYDROBROMIDE	442	329	307	1078
	RISPERIDONE	161	129	116	406
	ZIPRASIDONE HCL	154	91	98	343
	ARIPIPRAZOLE	97	61	58	216
	METHADONE HCL	71	69	55	195
	PALIPERIDONE	79	45	48	172
	HALOPERIDOL	48	72	49	169
	OLANZAPINE	61	57	46	164
	PALIPERIDONE PALMITATE	32	41	33	106

QUETIAPINE FUMARATE Total		1857	1590	1399	4846
CLONAZEPAM	CLONAZEPAM	763	653	619	2035
	DIVALPROEX SODIUM	295	328	226	849
	METHADONE HCL	105	92	108	305
	ALPRAZOLAM	73	95	83	251
	DIAZEPAM	42	79	72	193
	TEMAZEPAM	72	52	52	176
	GABAPENTIN	49	45	20	114
	VALPROATE SODIUM	41	32	27	100
	LAMOTRIGINE	34	35	27	96
	LORAZEPAM	34	36	20	90
CLONAZEPAM Total		1508	1447	1254	4209
WARFARIN SODIUM	WARFARIN SODIUM	462	491	375	1328
	LEVOTHYROXINE SODIUM	215	212	237	664
	SIMVASTATIN	315	276	15	606
	AMIODARONE HCL	92	185	99	376
	CLOPIDOGREL BISULFATE	74	95	43	212
	ALLOPURINOL	62	68	53	183
	ASPIRIN	66	66	46	178
	FENOFIBRATE	51	34	26	111
	GEMFIBROZIL	33	59	18	110
	LOVASTATIN	46	56	1	103
WARFARIN SODIUM Total		1416	1542	913	3871
METHADONE HCL	ALPRAZOLAM	304	297	227	828
	OXYCODONE HCL	158	152	135	445
	METHADONE HCL	111	121	125	357
	HYDROCODONE-ACETAMINOPHEN	95	109	105	309
	CLONAZEPAM	87	100	95	282
	DIAZEPAM	94	101	80	275
	OXYCODONE W/ ACETAMINOPHEN	72	91	63	226
	QUETIAPINE FUMARATE	52	60	56	168
	TEMAZEPAM	52	60	53	165
	LORAZEPAM	35	46	31	112
METHADONE HCL Total		1060	1137	970	3167
Grand Total		16738	17282	19655	53675